

Start Download

File size: 487KB. Full Version. Rating: 5.0 Stars. ConvertAnyFile.

5 Best Linux Desktop Environments With Pros & Cons
(http://www.Linuxandubuntu.Com/Home/5-Best-Linux-Desktop-Environments-With-Pros-Cons)

7/7/2015

142 Comments (http://www.linuxandubuntu.com/home/5-best-linux-desktop-environments-with-pros-cons#comments)



If you are new to Linux then I'm sure you are giving up lots of time choosing **Desktop Environment** of your Linux Distribution. You are probably thinking to give a try to each one of them but that's very time consuming. Edit - There are other good DEs also That's why I'm reviewing the *5 Best Linux Desktop Environments with the pros & cons*. The article gives you what you should know for choosing a DE. So let's get started!

(http://www.linuxandubuntu.com/home/5-best-linux-desktop-environments-with-pros-cons)

When it comes to select a Linux Desktop Environment (DE), then there are numerous DEs to choose from. I've been using Linux for long and I've tried (Used) almost all major DEs until I found the one that I needed for my primary work. You finally have to stick with one DE to work better.

The following list gives the 5 Best Desktop Environment, although there are many out there but this list will help you in choosing the one that you need in less time. So let's get started with our first Linux Desktop Environment. And Don't forget to rate the DE that you like and also comment the best features of the DE you are using.

1. KDE

I wanted to start from #5 but I thought let's put the #1 straight to you. Yeah! That's KDE. Although you are not interested but KDE development was started in 1996 and released its first version in 1998. KDE is the most customizable DE that means you can customize each and everything in this DE. It is built on modern technologies like Qt. **KDE** is offered by many popular Linux Distributions, such as, **Ubuntu** (http://www.linuxandubuntu.com/home/ubuntu-1504-vivid-vervet-released-with-windows-menu-to-show-always-and-many-more-changes), Linux Mint (http://www.linuxandubuntu.com/1/post/2014/12/linux-mint-171-rebecca-available-for-download.html), OpenSUSE, Fedora, kubuntu, PCLinuxOS and many more.

KDE is the most customizable Desktop Environment among others. As in other desktop environment you need several plugins, widgets and tweak tools to customize the environment, KDE builds all of the tools and widgets packed in the system settings. With the advanced settings manager everything can be controlled without any third party tool to beautify & tweak the desktop according to the user's wishes and needs.

KDE's Plasma 5 development is the most advanced DE ever that comes with many improvements, mostly focused on visual experience (better launchers, menus and notifications) and usability across different devices. Plasma is also faster and compatible even with old and low configuration hardware.

Some of the default applications in KDE environment are -- Dolphin (file manager), Konsole (terminal), Kate (text editor), Gwenview (image viewer), Okular (document and PDF viewer), Digikam (photo editor and organizer), KMail (email client), Quassel (IRC client), K3b (DVD burning application), Krunker (launcher) and more...

Pros:

The *most* advanced and powerful Desktop Environment
Highly customizable

Most Read This Week



(http://www.linuxandubuntu.com/home/dual-ubuntu-15-04-14-10-and-windows-10-8-1-8-step-tutorial-with-screenshots)

Dual-Boot Ubuntu 15.04/14.10 And Windows 10 Step By Step Tutorial With Screenshots
(http://www.linuxandubuntu.com/home/dual-boot-ubuntu-15-04-14-10-and-windows-10-8-1-8-step-by-step-tutorial-with-screenshots)



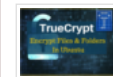
(http://www.linuxandubuntu.com/home/how-to-access-linux-files-in-windows-when-dual-booting-linux-ubuntu-linux-mint-and-windows-10-81)

[How To] Access Linux Files In Windows When Dual Booting Linux, Ubuntu, Linux Mint And Window:
(http://www.linuxandubuntu.com/home/how-to-access-linux-files-in-windows-when-dual-booting-linux-ubuntu-linux-mint-and-windows-10-81)



(http://www.linuxandubuntu.com/home/5-best-linux-desktop-environments-with-pros-cons)

5 Best Linux Desktop Environments With Pros & Cons
(http://www.linuxandubuntu.com/home/5-best-linux-desktop-environments-with-pros-cons)



(http://www.linuxandubuntu.com/home/how-to-install-use-truecrypt-in-ubuntu-linux-to-encrypt-files-folders)
How To Install & Use TrueCrypt In Ubuntu Linux To Encrypt Files & Folders
(http://www.linuxandubuntu.com/home/how-to-install-use-truecrypt-in-ubuntu-linux-to-encrypt-files-folders)



(http://www.linuxandubuntu.com/home/3-twitter-clients-for-linux-that-you-dont-want-to-miss)
3 Twitter Clients For Linux That You Don't Want To Miss
(http://www.linuxandubuntu.com/home/3-twitter-clients-for-linux-that-you-dont-want-to-miss)

Looks modern and sleek
Compatible with Slower/old hardware

Cons:

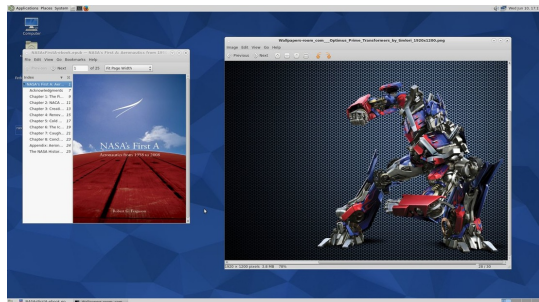
Some components like Kmail are way too complicated for an average user

If you read our [Top 4 Open Source Email Clients For Linux](http://www.linuxandubuntu.com/home/top-5-open-source-email-clients-for-linux) (<http://www.linuxandubuntu.com/home/top-5-open-source-email-clients-for-linux>), I mentioned the advancement of Kmail configuration which is not easy for a newbie.

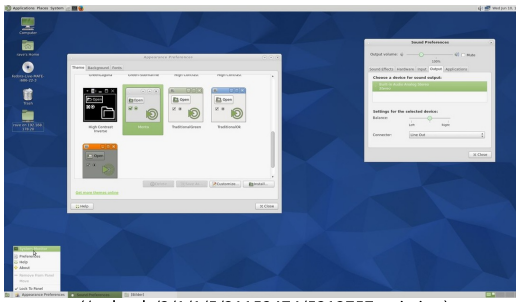
[AdChoices](#) [Linux Download](#) [Linux ISO](#) [Linux Security](#) [Linux PDF](#)

KDE Screenshots

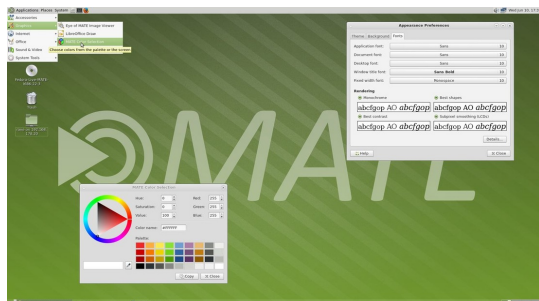
165 Votes



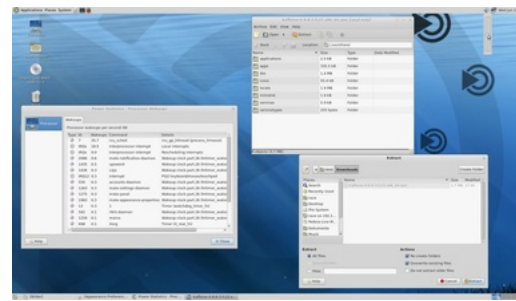
(/uploads/2/1/1/5/21152474/8135403_orig.jpg)



(/uploads/2/1/1/5/21152474/5212757_orig.jpg)



(/uploads/2/1/1/5/21152474/7336223_orig.jpg)



(/uploads/2/1/1/5/21152474/1688621_orig.jpg?393)

2. MATE

The #2 in list is MATE. **MATE** (http://en.wikipedia.org/wiki/MATE_%28software%29) (Spanish pronunciation: [ˈmate]) is a desktop environment forked from the now-unmaintained code base of GNOME 2. It is named after the South American plant Yerba **mate** and tea made from the herb, **mate**. The use of a new name, instead of GNOME, avoids conflicts with GNOME 3 components. **MATE** (<http://mate-desktop.org/>) was built by one of the unhappy user who did not like the turn of Gnome 2 toward Gnome shell for the modernization of the Desktop.

MATE gives the feelings of using the old desktop environment but has got lots of interface improvements over the time. MATE is also very good with low configuration computers, so use MATE if you've an old or slower computer.

MATE also comes with many popular Linux distributions, such as, Ubuntu, Linux Mint, Mageia, Debian and many more. If you read my post on [Release of Ubuntu 15.04 Beta 1](http://www.linuxandubuntu.com/home/ubuntu-mate-15-04-vivid-vervet-beta-1-released-ubuntu-mate-is-now-official-flavor) (<http://www.linuxandubuntu.com/home/ubuntu-mate-15-04-vivid-vervet-beta-1-released-ubuntu-mate-is-now-official-flavor>), there you read that Ubuntu MATE, the first time is an official release.

"Welcome Ubuntu MATE official Release for the first time. Now it'll be easier for the users to keep their software updated, as all of its components are now in Ubuntu repositories."

The applications packed with MATE are Caja (file manager), Pluma (text editor), Atril (document viewer), Eye of MATE (image viewer) and many more. It's a simple and lightweight DE for users who don't need all the bells and whistles of other feature-packed DES.

Pros:

Works fine with old/slower computers
Lightweight Desktop Environment

Cons:

I don't know, If you know please comment below. MATE Just works fine.



(<http://www.linuxandubuntu.com/home/how-to-change-boot-order-set-default-boot-os-in-ubuntu-15-04-linux-mint-or-other-derivatives>)

How To Change Boot Order/Set Default Boot OS in Ubuntu 14.10/15.04 / Linux Mint Or Other Derivatives (<http://www.linuxandubuntu.com/home/how-to-change-boot-order-set-default-boot-os-in-ubuntu-14-10-15-04-linux-mint-or-other-derivatives>)

(<http://www.facebook.com/linuxandubuntu>)
(http://twitter.com/intent/follow?source=followbutton&variant=1.0&screen_name=linuxandubuntu)

(<https://plus.google.com/+LinuxandUbuntu>)

(http://www.youtube.com/channel/UCsYrg?sub_confirmation=1)

(<http://www.pinterest.com/linuxandubuntu>)

(<http://www.linuxandubuntu.com/1/>)

Please Donate Us



We're On Google+

Linux And Ubuntu

[google.com/+LinuxandUbuntuWeb](https://plus.google.com/+LinuxandUbuntuWeb)

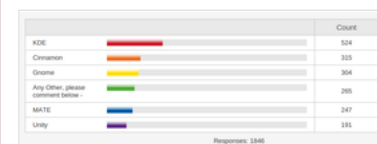
LinuxAndUbuntu.com Daily Linux or Ubuntu News Applications reviews. www.linuxandubuntu.com

[G+](#) [Follow](#) [+1](#)

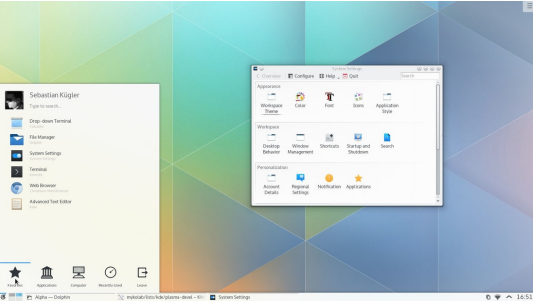
+ 229

Poll Results

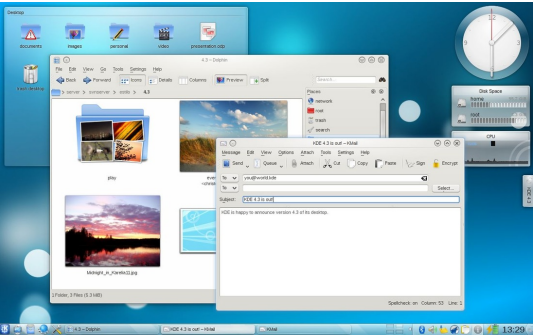
What is your favorite Linux Desktop Environment?



MATE Screenshots



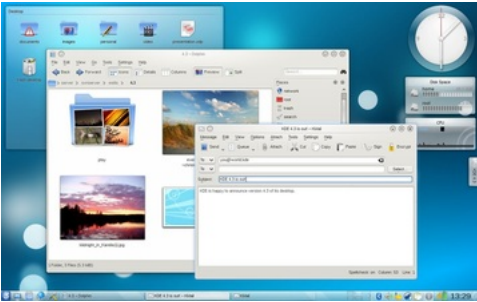
(/uploads/2/1/1/5/21152474/9011506_orig.jpg)
Plasma 5.0 Screenshot



(/uploads/2/1/1/5/21152474/1405920_orig.jpg)
KDE 4.2.0 Screenshot



(/uploads/2/1/1/5/21152474/533467_orig.jpg?342)
KDE 4.1.0 Screenshot



(/uploads/2/1/1/5/21152474/8576252_orig.jpg?359)
KDE 4.3.0 Screenshot

3. Cinnamon

The #3 DE in my list is [Cinnamon \(http://cinnamon.linuxmint.com/\)](http://cinnamon.linuxmint.com/). After MATE, Cinnamon is another Desktop Environment that was built by Linux Mint Team for unhappy users of Gnome. But Cinnamon unlike MATE was built on Gnome 3 technologies. Cinnamon is new and so have been active in development but being new does not make this amazing Desktop Environment less featurable.

Cinnamon has all the features that DEs like Gnome and Unity don't have. Cinnamon is highly customizable DE and does not require any external plugin, widget and tweak tool to customize the desktop. Cinnamon can even download and install themes from the settings manager itself, not even need to open up Internet browser.

With all the amazing and required features, Cinnamon can be very handy for any new user to Linux. Many users quit using Linux because they don't understand the way Linux works but I highly recommend that a newbie must start off with Cinnamon **Desktop Environment**.

Many popular Linux distributions offer their flavors in Cinnamon, such as, Ubuntu, Fedora, OpenSUSE, Gentoo, Arch Linux and Cinnamon is the default DE of Linux Mint.

Pros:

- Extremely polished
- Familiar with New users
- Makes Gnome more usable by forking some core apps
- Highly customizable

Cons:

- Could be buggy sometime

Cinnamon Screenshots



Translate Our Site

Seleziona lingua

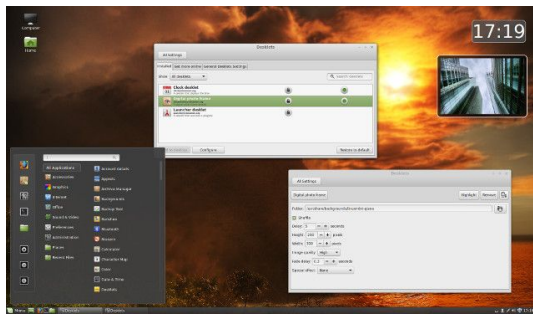
Powered by Google

Notice : Please be careful, after translation con will change.

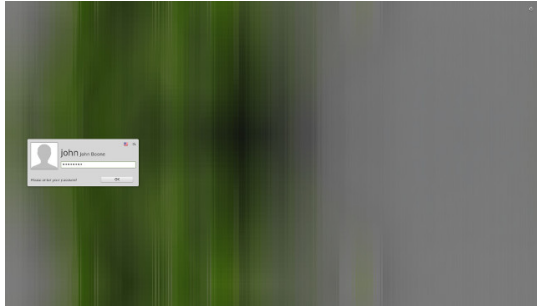
RSS Feed (/1/feed)



(/uploads/2/1/1/5/21152474/1682762_orig.jpg)



(/uploads/2/1/1/5/21152474/3917490_orig.jpg)



(/uploads/2/1/1/5/21152474/866595_orig.jpg)



(/uploads/2/1/1/5/21152474/4218720_orig.jpg)

4. Gnome

The #4 in my list is **Gnome** (<https://www.gnome.org/>). Gnome was first released in 1999. Gnome was providing a simple and classic *desktop experience* without not much options to customize. But in 2011 Gnome introduced new design in GNOME 3 and that traditional desktop environment was replaced with GNOME Shell. And this ended up with dissatisfaction among Gnome users and many developers and this unhappiness caused the creation of many other DEs, such as, MATE and Cinnamon.

But even after that Gnome prevailed and now being used widely. Gnome have contained the core idea of simple and faster DE and that's why Gnome is still simple and faster. But customizations can be done through installing third parties applications and tools.

Gnome could be for those users who tend not to tweak the system alot more. That's why Gnome does not even include some simple tweak options like, changing theme and even font. For both of these basic tweaks user would need to install gnome-tweak-tool. So overall Gnome is not much customizable by default but through third party applications/tools.

Gnome is used as default DE in Fedora and is offered in several popular Linux distributions as flavor, such as, Ubuntu, Debian, OpenSUSE and many more.

Pros:

Simple, easy to use

Functionality can be expanded through extensions

Cons:

Lacks many features found in other desktop environments

Extension management is poor

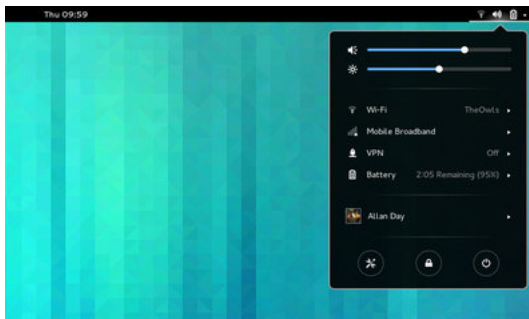
189 Votes

Gnome Screenshots

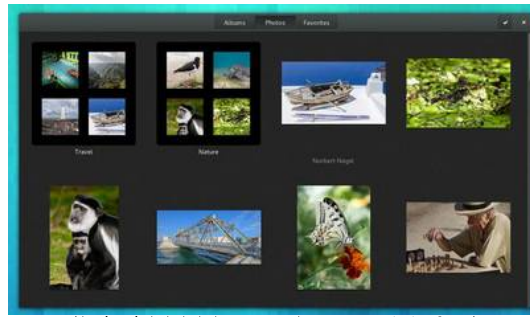


(/uploads/2/1/1/5/21152474/8488878_orig.jpg?404)





(/uploads/2/1/1/5/21152474/4899624_orig.jpg?396)



(/uploads/2/1/1/5/21152474/8431448_orig.jpg?404)

5. Unity

Unity (<https://unity.ubuntu.com/>) is a shell developed by Canonical, the company behind Ubuntu. Unity runs on top of Gnome Desktop Environment and uses all core Gnome applications.

Initially it was developed to run on netbooks to make better use of the screen real estate. But when Gnome decided to go its own way and supposedly didn't accept some changes proposed by Ubuntu teams, Canonical went ahead and created its own shell, which suited its needs better.

Unity first release came out in 2010 and since then Unity have got several improvements. Today Unity can be installed on other distributions like several other DEs.

Unity has a different user interface. Unity has a launcher on left side and on top of the launcher the search icon which is also called 'Dash' exist. When a file is sought on Dash, it gives results not only from Hard Disk but from online sources, such as, Google Drive, Facebook, Picasa, Flickr and more.

Unity also gives options to hide the launcher and show it when touch the sidebar. User can also increase/decrease sensitivities for showing up the launcher menu.

Unity is simple and faster but Unity is does not include much options under System Settings to customize the desktop. For installing themes and customizing different other options, such as, System menu should be visible always or not or 'One click minimize from launcher icon', user need to install third party tools. CCSM and Unity Tweak Tool are very popular customization tools for Unity **Desktop Environment**.

Unlike KDE user is not given option to block/disable notifications in Unity. There are tons of searches on the Web for 'How to disable Unity Notifications'. Although It's possible but quite difficult for a new user. Add to that auto-hiding menus and a lack of official support by any major distributions, and Unity becomes extremely counter productive.

Pros:

- Intuitive
- New technologies like HUD
- Customizable by third party applications

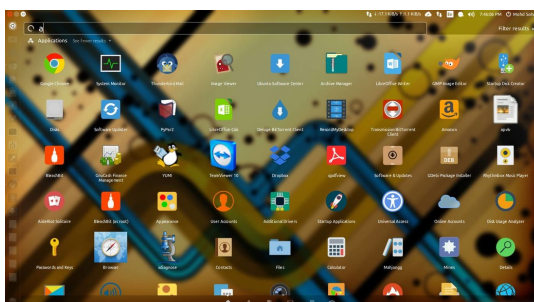
Cons:

- Poor implementation of notifications
- Very little default tools for customization
- Inconsistent UI

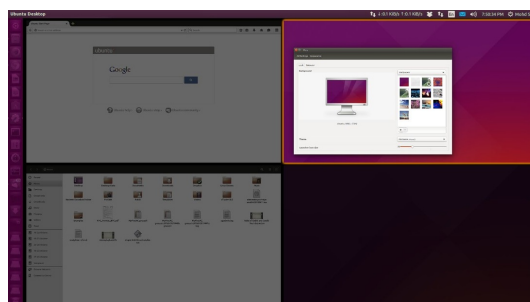
Unity DE Screenshots

AdChoices

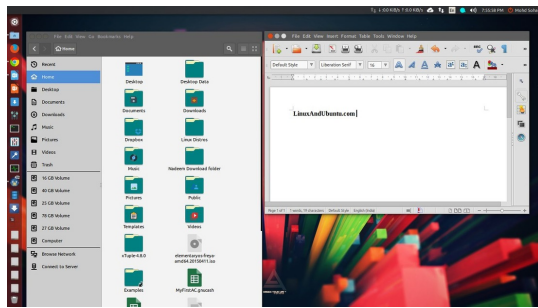
- [Linux OS](#)
- [Linux Fedora](#)
- [Linux Flavor](#)



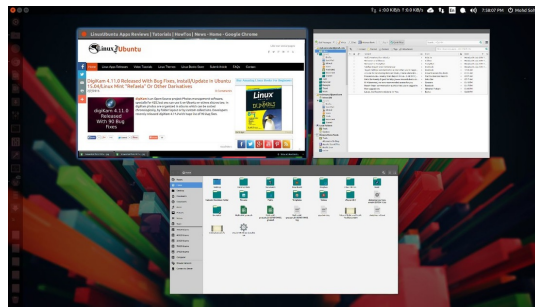
(/uploads/2/1/1/5/21152474/264681_orig.jpg)



(/uploads/2/1/1/5/21152474/3253920_orig.jpg)



(/uploads/2/1/1/5/21152474/6395968_orig.jpg)



(/uploads/2/1/1/5/21152474/8361644_orig.jpg)

Here comes the end of list. I have tried my best to give you some relevant information that will help you finding the best Desktop Environment for your Linux Distro. Although I covered some of the DEs but as you can see the #1 KDE is for Advanced users whereas #2 META and #3 Cinnamon are for some medium level users but the last two #4 Gnome #5 Unity are for users who don't want much customization in their DE.

You have got the basic idea of choosing your DE, you can choose any of the above depending on your need or you can choose any other that fulfills your needs.

Please do take poll below telling us which one is your favorite DE and specify if you are using any other Desktop environment except these five.

NOTE

Choose the DE that fits your needs & Experience even if that is not mentioned in this list.

Please Donate us a cup of coffee!

[Donate](#)



Raccomandata per te



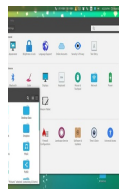
8 Things To Do After
Installing Ubuntu 15.04 Vi...

www.linuxandubuntu.com



Linux Kernel 3.18.15
Longterm Released, Install...

www.linuxandubuntu.com



Ambiance & Radiance Flat
Colors 15.04.4 GTK Theme

www.linuxandubuntu.com



How To Setup Virtual
Private Network (VPN) In L...

www.linuxandubuntu.com



YouTube 0.6 GNOME Icon
Theme Install In Ubuntu O...

www.linuxandubuntu.com

AddThis ([//www.addthis.com/websites-tools/overview?utm_source=AddThis%20Tools&utm_medium=image&utm_campaign=Recommended%20content%20logo](http://www.addthis.com/websites-tools/overview?utm_source=AddThis%20Tools&utm_medium=image&utm_campaign=Recommended%20content%20logo))



Mohd Sohail

(<http://www.linuxandubuntu.com/home/welcome>)

My name is Mohd Sohail, a fan of Linux, creator of LinuxAndUbuntu.com and like to review most out



142 Comments (<http://www.linuxandubuntu.com/home/5-best-linux-desktop-environments-with-pros-cons#comments>)

142 Comments www.linuxandubuntu.com

Login ▾

Recommend Share

Sort by Best ▾



Join the discussion...



elder_geek • 3 months ago

I can't believe that XFCE did not make that list. It is at least popular enough the list should be extended to 6 best.

Still I am a Fluxbox user. It is the best Linux Window Manager for me. Even if will garner less than 2% of the votes.

17 ^ | ▾ • Reply • Share ▸



phinn → elder_geek • 3 months ago

Agree, my two top DEs these days (after tweaks) are Unity and XFCE.

1 ^ | ▾ • Reply • Share ▸



Mohd Sohail → elder_geek • 3 months ago

Yes I am sorry that XFCE is not there. I wanted to make the list shorter so that newbies don't get trouble choosing the better one. So I made this list to be good mostly for newbies.

1 ^ | ▾ • Reply • Share ▸



Tim Locke → Mohd Sohail • 3 months ago

The pros and cons in this article are rather superficial. XFCE should be #1. I used KDE for too many years. Its bugs drove me away. XFCE is very customizable yet lightweight and stable.

5 ^ | ▾ • Reply • Share ▸



Mike H → Tim Locke • 3 months ago

Yup KDE is a buggy bloated mess. XFCE is the best IMO.

And now that the XFCE devs are working toward wayland support it will keep getting better.

1 ^ | ▾ • Reply • Share ▸



hengels → Mike H • 3 months ago

I was using KDE 4 on several machines for 18 months. After a proper configuration and sticking primarily with KDE applications (what is easy because there are plenty) I can report only an amazing stability and great performance. I am working up to 16 hours per day on a desktop and my demands are quite high. But KDE never let me down, something what I cannot say about UNITY where I had always issues with Compiz. I switched recently to MATE because my harddisk crashed and I switched quickly to an older machine (with little RAM) where I installed MATE. MATE works so great for me that I am still on that machine. Once I have more time I will fix my other machine and will try KDE 5.

1 ^ | ▾ • Reply • Share ▸



Robert Hagaman → hengels • 3 months ago

And that's just it. KDE isn't great out of the box. It takes tweaking to get it right. Part of being a good UI is someone being able to load it on their computer and them being able to just use it. With XFCE you can do that. Plus, between RAM and power usage, KDE is horrible for anything other than a big desktop. It's bloated with all the K-brand apps that are ridiculous, considering they all are bad versions of things available for download. I've always had issues with it on a laptop. Kde, Gnome, and Unity pretty much turned their backs on a large part of the Linux community; though Ubuntu has been doing better with Unity.

^ | ▾ • Reply • Share ▸



Forrest Cahoon → Mohd Sohail • 3 months ago

I used XFCE for many years when I ran screaming away from GNOME 3. I was recently induced to try MATE because someone said they are better at keeping up with opendesktop.org standards, and so I'm sticking with that now, although the UI (once I've customized it to my liking) is practically identical. Perhaps I would prefer XFCE if I had a lower-powered computer, but my machine handles either without breaking a sweat. XFCE should definitely be on the list.

^ | ▾ • Reply • Share ▸



FuzzShifter → elder_geek • 2 months ago

Agreed on XFCE. While I prefer to run KDE on machines with lots of horsepower, XFCE is quite complete... And getting the endorsement of Linus means that XFCE truly is GNU/Linux.

^ | ▾ • Reply • Share ▸



easily_confused → elder_geek · 3 months ago

Cheap shot, me replying to the oldest post so I will be seen. No one sorts by newest, and being number 124 means it won't get read. XFCE has a feature NO ONE else has.

XFCE is the only desktop that supports active icons. That is, iconized terminals and edit sessions that can be placed anywhere on the desktop. If you like to edit and jump around in dozens of open files in any of 10 desktops, it is the only way. (unless you have an old Sun workstation) But, that said, I never use any of its GUI tools/managers. (actually I run XFCE3 still)

^ | v · Reply · Share ›



Jrodd · 3 months ago

XFCE is fricken awesome.

And why the hate on Unity? Isn't more "usable" than Gnome Shell?

4 ^ | v · Reply · Share ›



Mohd Sohail → Jrodd · 3 months ago

There is not hate on Unity... Unity is in under group of DEs for Beginners.

^ | v · Reply · Share ›



Emblem Parade · 3 months ago

Xfce would be at the top of my list, while KDE would be at the bottom. I appreciate the power of KDE, but from a usability perspective every time it is a nightmare! Everything from the start menu to the settings is a confusing mess of options that would intimidate any new user. I think the project could do well with a big "human interface cleanup" project, going one by one on each component and making it sane. :/

4 ^ | v · Reply · Share ›



Magnus → Emblem Parade · 3 months ago

KDE 4 used to have quite messy settings, but IMO it has gotten much better with KF5.

1 ^ | v · Reply · Share ›



Mohd Sohail → Magnus · 3 months ago

KDE 5 has improved lots of stuff but need somebody interested in customizations.

^ | v · Reply · Share ›



JD II · 3 months ago

Whew, LXDE or XFCE for me. Of course I also run #! so I like minimal distractions. Why waste resources on stuff like KDE, MATE, GNOME when you have LXDE. The screen is mostly filled with application windows anyway, who really sees the desktop much? Or am I the only person who has e-mail, browser, file managers and virtual machines running all at the same time. Multiple screens, virtual desktops are great. Just never really see my desktop background unless I'm shutting down or just started. But that's the beauty of Linux, BSD and UNIX type systems. Choice.

3 ^ | v · Reply · Share ›



Mohd Sohail → JD II · 3 months ago

I'm also a fan of XFCE but here I didn't mention them cause I thought to present DE depending on Users choices and level of experience.

^ | v · Reply · Share ›



Tim Locke → Mohd Sohail · 3 months ago

Yet you chose KDE over XFCE. KDE is vastly more complicated due to all the settings. You said as much about KMail, but it's true about the entire desktop. I liked it until the bugs drove me away. The web browser and office suite are next to useless.

1 ^ | v · Reply · Share ›



Mohd Sohail → Tim Locke · 3 months ago

Yes i chose I am not comparing any one of them. There are many other KDE fans that are saying KDE does not have bugs. I feel bugs are in most DEs but that does not mean I should switch all over my life. Bug are fixed also.

^ | v · Reply · Share ›



Philip Poupart · 3 months ago

This article should just be called.. Here are five desktop environments; argue about them in the comments.

3 ^ | v · Reply · Share ›



Mohd Sohail → Philip Poupart · 3 months ago

yes it can be called if you're just taking this article upto these five distros. All of these five distros are for most users including Advanced, Medium and Newbies. The first one is for Advanced, second MATE is for Medium users and remaine four are for Newbies. If you don't like any one of these just because of look or some other specific reasons then go for something according to your need and level of knowledge.

^ | v · Reply · Share ›



Tim Locke → Mohd Sohail · 3 months ago

Any article that tries to rate desktops is going to cause arguments. It would be best to provide a

review of each with enough information to help a new user decide which they would like to try and leave it at that, unless you like the controversy, in which case, it's perfect.

^ | v · Reply · Share ›



fredbird67 · 3 months ago

I'm surprised nobody has mentioned LXDE. I've tried quite a few desktop environments and a few window managers and have even had other favorites in the 10+ years that I've been a Linux user (I started out with KDE 3.x, in fact), but anymore, my favorite desktop environment is LXDE, never mind the fact that both my desktop box and my laptop are both 64-bit with 4GB of memory and could quite comfortably run something like KDE, Cinnamon, or Unity. And as far as I'm concerned, I have everything in LXDE that I need when it comes to my desktop.

4 ^ | v · Reply · Share ›



Barry Rich → fredbird67 · 3 months ago

I'm another LXDE fan. It's nice and light, and is quite fast even on a gutless little netbook that I own, and it simply flies on my better hardware. It serves all my needs quite well. My second choice would be XFCE.

3 ^ | v · Reply · Share ›



fredbird67 → Barry Rich · 3 months ago

Ditto for Xfce. In fact, Xfce was my desktop of choice until a little over a year ago, when I noticed that they plan to go ahead with the migration to being based on GTK3, which is 1) bloated compared to GTK2, and 2) keeps breaking GTK themes whenever a new version of GTK3 is released (does anyone know if this problem has been fixed yet?) and as such, that idea didn't set well with me. LXDE, OTOH, has announced that they will instead migrate to the Qt base that KDE uses, thereby sidestepping those problems, and call all subsequent versions LXQt instead of LXDE.

1 ^ | v · Reply · Share ›



Mohd Sohail → Barry Rich · 3 months ago

Thankx Barry for sharing your DE. I would love to add them if I write another article with a bit more extended information.

^ | v · Reply · Share ›



Sven Depoorter → fredbird67 · 3 months ago

Same for me. Tried a lot of them and ended up with LXDE which has not crashed once in 3 years! No strange bugs either. It misses some features though as its meant to be a lightweight environment (which for me is more a pro than a con).

1 ^ | v · Reply · Share ›



Mohd Sohail → Sven Depoorter · 3 months ago

I'm not a regular user of LXDE but I liked this lightweight simple DE for simple & medium users both.

^ | v · Reply · Share ›



john beere → fredbird67 · 3 months ago

LXDE is nice but it lacks some useful features. LXDE is also light but most computers are powerful enough to run even the heaviest desktop environments which renders LXDE's advantage kind of useless.

^ | v · Reply · Share ›



fredbird67 → john beere · 3 months ago

You said LXDE lacks some useful features. Could you please elaborate on what it lacks? I'm not trying to start an argument here or anything, I'm just curious as to if there's something I'm missing out on that I could potentially find useful.

2 ^ | v · Reply · Share ›



fredbird67 → fredbird67 · 3 months ago

OK...ALU, I'll go through all you said here and offer my comments:

PCManFM is still the official file manager of LXDE. I'm not sure what you mean by it lacking preview, though. Are you referring to it having a pane on the left with shortcuts to commonly-used folders? If so, it has that.

FTP and SMB support: Honestly, I've never used those and am thus not in a position to comment on those, although I think I've heard a rumor that it now has SMB support, but I could be wrong.

Creating desktop shortcuts is much easier now. If you're trying to put a shortcut to a frequently-used program on your desktop, you go to the menu, find the program you want to create a shortcut for, right-click on it, and you'll see a short menu appear that has that option in there (don't remember what it's called, as I'm at work right now, where I'm on (cough, cough) Windows and not by choice).

Memory and network usage monitor panel applets: Both of those are now present in LXDE.

Menu editing: Yes, that's still a pain in the patoot (I've tried it for myself LOL).

[see more](#)

^ | v · Reply · Share ›



john beere → fredbird67 · 3 months ago



Granted It's been many years since I last used LXDE, so i forgot a lot of those limitations. But (from what I still remember) last time I used it PCManFM used to be the file manager. It was the fastest thing I have ever seen. But it lacked preview, it didn't support protocols such as ftp, smb, creating a desktop shortcut was done by editing a text file, adding shortcuts to the task bar was complicated, it didn't have widgets to monitor the memory usage and network usage in the taskbar (but it did have a widget to monitor the CPU though), adding or removing menu items (aplications) was complicated (manually editing a text file). Please let me know if things changed, i would be glad to try LXDE again.

^ | v · Reply · Share ›



Mohd Sohail → john beere · 3 months ago

That's a huge list of lacks but you will have see if all of these lacks/bugs are still there or not. This is Linux development is lightening fast ;)

1 ^ | v · Reply · Share ›



john beere → john beere · 3 months ago

Also, the task bar was glued to the bottom, no way to move it on the side or on top of the screen. And in general the settings manager offered way less settings options compared to KDE.

^ | v · Reply · Share ›



Hans Bezemer · 3 months ago

Trinity. Still KDE, but for humans.

2 ^ | v · Reply · Share ›



Mohd Sohail → Hans Bezemer · 25 days ago

hahah ;)

^ | v · Reply · Share ›



drohm · 3 months ago

Unity and not XFCE?? Wow.

2 ^ | v · Reply · Share ›



Jrodd → drohm · 3 months ago

*GnomeShell and not XFCE WOW

2 ^ | v · Reply · Share ›



Mohd Sohail → drohm · 3 months ago

You can think of XFCE somewhere with MATE #2 or #3 or any of the five depending on the purpose it solves for you.

^ | v · Reply · Share ›



alsocurious · 3 months ago

So - why is KDE not the default in those mainstream distros - Ubuntu, Debian, Fedora, OpenSuSE if it is so good? Qt was in chains by a restrictive license while the property of Trolltech many years ago but is no longer. Gnome is not modern tech, is not written in an OO language but in plain C (with X-Window style callbacks, etc) whereas KDE is written in an OO language - C++. KDE looks and feels like MS Windows (not that MS should be flattered by that - its just business). So again - why is it that KDE is not default in all those mainstream distros (KDE used to be default in OpenSuSE I believe)?

2 ^ | v · Reply · Share ›



TheBlackCat13 → alsocurious · 3 months ago

KDE is the default in openSUSE.

1 ^ | v · Reply · Share ›



Spika → alsocurious · 3 months ago

Like why do computers come with Windows installed instead of Linux.

1 ^ | v · Reply · Share ›



drillmaster → alsocurious · 2 months ago

There is no problem with licensing or language in regards to Qt or GTK.

The problem is with Gnome3 and this problem is called closed dictatorship club. And sucked GTK inside it.

^ | v · Reply · Share ›



Mohd Sohail → alsocurious · 3 months ago

Because the users they (Ubuntu, Debian, Fedora Other mainstream distros) are targeting want Unity, Gnome, Cinnamon. Your question is more like answering what Linux distro should I choose. KDE is default DE for other distros and their users want to use KDE.

If Ubuntu, Fedora and other mainstream distros were using KDE then what about the other good desktop environment. I'm not saying KDE is the best for everyone, if you read the conclusion of article I said KDE is for advanced users. If you're not advanced user then Ubuntu, fedora and other simple DE distros.

^ | v · Reply · Share ›



alsocurious → Mohd Sohail · 3 months ago

My question was partly rhetorical in that I wanted to see suggestions to answers but I think Gnome

is the default because KDE is foreign to the US which is the driver behind the mainstream distros (except SuSE) and because of inertia as those mainstream distros started using Gnome at a time when Qt was less free and are now entangled in Gnome. As to other distros having KDE as default - I don't know which they are and in particular if any are mainstream distros.

^ | v • Reply • Share ›



Mohd Sohail → alsocurious • 3 months ago

I am simply putting the point that is important for Linux users and their problems. They should know what DE they should choose and that's all. Things you said may be true that nobody cares when choosing distro or DE that this reason is behind KDE is not the default DE for mainstream Linux distributions.

^ | v • Reply • Share ›



L L • 3 months ago

Nice top 5! I've been using LXDE for more than an year now. Lightning fast and not ugly. It can keep up with XFCE. My other choices before LXDE were: XFCE 4, KDE3 (I couldn't keep a week using KDE4, bugs and more bugs...) and WindowMaker (yeah... I'm a bizarre creature). The worst experience I had so far was while trying Enlightenment. Didn't worked out good for me...

1 ^ | v • Reply • Share ›



Mohd Sohail → L L • 3 months ago

Thanks @L L for sharing your experience.

^ | v • Reply • Share ›



Hosam Mohamed • 3 months ago

The amount of crashes I get on KDE desktops are too damn high

1 ^ | v • Reply • Share ›



john beere → Hosam Mohamed • 3 months ago

What a load of crap. I have been using KDE for the past 10 years both at work (software development) and at home and i have never ever had any issues with KDE (I skipped KDE 4.0 though).

2 ^ | v • Reply • Share ›

[Load more comments](#)

ALSO ON WWW.LINUXANDUBUNTU.COM

[WHAT'S THIS?](#)

Everpad Client To Use Evernote In Ubuntu - LinuxAndUbuntu

5 comments • 2 months ago



John Buczek — Yes... I discovered that authorization thing too but once I had that cleared I still had problems with "sync dropout". As I said, I had thousands of ...

Cutegram 2.2.0 Telegram Client For Linux Released, Install In Ubuntu/Linux Mint/Debian Based ...

6 comments • 5 months ago

ChaletOS, New & Beautiful Linux Distribution Based On Xubuntu And A Clone Of Windows - ...

5 comments • 25 days ago



Mohd Sohail — Thanks Peter for explaining my thoughts and clarifying what the article was all about. Thank you again! Keep helping newbie Linux users.

Zorin OS 10 Released, A Friendly Linux Distribution For Beginnners - LinuxAndUbuntu

3 comments • 2 months ago

ABOUT LINUXANDUBUNTU

LinuxAndUbuntu.com focuses on open source projects but specific on debian based distributions. We also give value to other linux distributions.

LINKS

Ubuntu.com
(<http://www.ubuntu.com>)

Video Tutorials (/video-tutorials.html)

Tutorials & HowTos
(<http://www.linuxandubuntu.com/home/category/tutorials-howtos>)

Privacy Policy
(<http://www.linuxandubuntu.com/privacy-policy.html>)

Contact us
(<http://www.linuxandubuntu.com/contact.html>)

FOLLOW US



(<http://www.facebook.com/linuxandubuntu>)

(<http://www.twitter.com/linuxandubuntu>)

(<http://www.google.com/+linuxandubuntu>)

(<http://www.pinterest.com/linuxandubuntu>)

(<http://www.rss.com/linuxandubuntu>)

MORE FROM LINUXANDUBUNTU

[Contribute Your Work \(/submit-article.html\)](#)

[Donate Us](#)

RSS FEED

Ubuntu (<http://www.ubuntu.com/>) is a registered trademark of Canonical Ltd (<http://canonical.com/>).

Any material in this site can not be reproduced without permission.